



GET READY FOR WHITE GOLD



Winter is Coming - 2017_18 [VIDEO](#)



TELLURIDE, COLORADO February 3-10, 2018
Lebanon Ski & Sport Club



1BR/1BATH SUITES
Ammon Bruce Sattazahn
Kathryn Ann Sattazahn
Deb Binkley
Terry Binkley
James Davin Mulligan
Cathy Lyn Mulligan
Erich G Bair
Barbara K Boggan
Theresa Lynn Resanovich
Nicholas G Resanovich, Jr
Anna Marie Kambic
Ronald Edward Lay
Kathryn Mclane Lay

2BR/2BATH SUITES
Gerald Richard Kreider
Jane Frances Miller
Dianne Bachman
Bethany Ann Amerman
Kevin Millard Smith
empty pillow
Paul Horst
Larry Groff
Sandra L Cauler
Walter Wall
Stephanie L. Butler
Lynn Raheb
Paul Timothy Ulrich
Patricia A Ulrich
Sherrie Ann Custar
Stephanie A Keckeisen
Shellie Sterner
Jeff Sterner
Ken Sterner
Dave Williams

3BR/3BATH SUITES
Anne Shutter
Gordon Shutter
Cindy Lutz
Dean Lutz
Denise Ann Flowers
Eileen Marie Staton
Ken Beam
Karen Beam
George S Riddle
Phyllis Elaine Riddle
Timothy Edward Ketterer
Cathy Sue Ketterer
Jack B Billmyer
Linda Ann Billmyer
Joe Stuart Peters
Vicki Ann Peters
Brenda A Bent
Mary E Sellers



GETTING THERE

PASSPORTS – I need your copy for ticketing!

Self Drive to Philly / Car Pool

Overnight Stay with Parking, Or Just Parking

<http://www.parksleepfly.com/>

American Airlines



Current itinerary (subject to change) is as follows:

#1965 03FEB PHILADELPHIA-CHARLOTTE 655A 843A
#486 03FEB CHARLOTTE-MONTROSE 950A 1204P
#486 10FEB MONTROSE-CHARLOTTE 1244P 617P
#1798 10FEB CHARLOTTE-PHILADELPHIA 820P 1000P



American recommends an arrival time at the airport of 1 ½ hrs prior to departure. You must be checked in within 45 minutes of scheduled departure. Curbside check-in is available at Philadelphia.



BAGGAGE AND GEAR

BAGGAGE: First checked bag = \$25

Dimension: 62 in / 158 cm

Weight: 50 lbs / 23 kgs



Second checked bag (Skis/Board and boots) = \$35

There are perks for Aadvantage premier members – [please check on line](#)

Allowance and requirements of Ski and Boarding Equipment

The following items will be treated as a single checked item:

1 pair of skis or a snowboard AND 1 bag containing a pair of ski or snowboard boots and your helmet/goggles. If you put anything else in your boot bag, you may have to pay an excess baggage fee.

Maximum weight and size

One pair of skis/snowboard up to 126 inches and one boot bag containing boots/bindings only and not to exceed 45 inches (length + width + height)

SHIPPING GEAR

SHIPPING SKIS, BOARDS, AND GEAR:

MOUNTAIN LODGE – TELLURIDE

457 Mountain Village Blvd, Telluride, Colorado, 81435.

Allow 7-10 days for shipping. Skis can arrive anytime within the week prior to arrival. Our skis can arrive between January 27th – February 3rd .

Put our group's name "Lebanon Ski Club" somewhere on the ski's packaging so the bell service know which group they are to be associated with. They will keep the skis in our bell closet until you arrive.

A: The cost to **ship** your **skis** and/or snowboard(s) with **Ship Skis**, **i.e.**, varies based on the origination and destination of the **shipment** as well as the desired service. A ground **shipment** can range from \$39.00 to \$69.00, while air shipments range between \$89.00 and \$149.00.



Luggage Free



ARRIVAL!

Arrive in Montrose, Colorado

Bus to Telluride takes about 1 ¼ hrs



Grocery/Beverage Stop in Montrose will be thirty minutes, tops!
30% cheaper than on the mountain. All suites have full kitchens with standard coffee pots and come with coffee when you check-in.

\$25 deposit for ski lockers if you wish, refundable at check out.

Parking for those driving in: \$20 per day. Valet will assist you. You can also park at the airport for \$7 per day and ride the shuttle in with the group.

Welcome Party Saturday @ 7 pm in the trip leader's Suite
Mountain Lodge Concierge
Telluride Mountain Guide & Adventure Center Representative
Lift Tickets Handed Out, Wine, Beer & Pizza

Superbowl Party Sunday afternoon in the trip leader's suite.
Heavy appetizers. You BYOB. Super Bowl \$\$Pool\$\$
The View also is throwing a Super Bowl party with multiple tvs.



GETTING AROUND



Lodge will provide a golf cart ride at anytime around the Lodge Property – too tired to walk to your door? Too many packages? Don't want to walk in ski boots? No worries, call the front desk for a ride 970-369-5000.

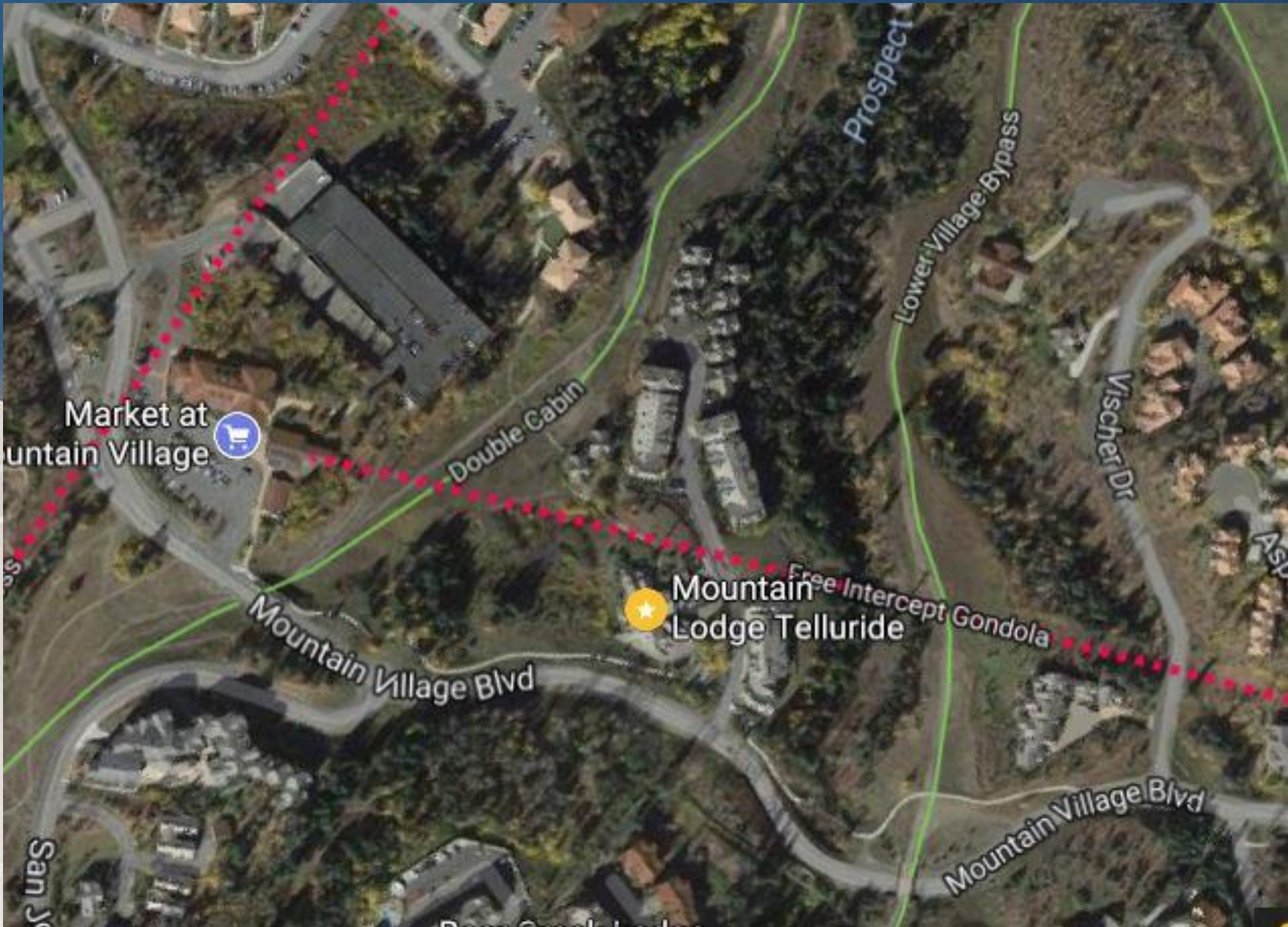
Parking for those driving in: \$20 per day. Valet will assist you. You can also park at the airport for \$7 per day and ride the shuttle in with the group.

The Intercept gondola is a 5-minute walk up a short hill. Or the shuttle will take you there. From Intercept gondola at Town Hall Plaza, ride to Mountain Village and then take the main gondola into Telluride.

Mountain Lodge shuttle also runs to the Mountain Village. Lodge can drive you to the free gondola with our shuttle and you can take the quick 15 minute gondola ride into the town of Telluride. The gondola runs until midnight or until 2am on the weekends.



Intercept Gondola @ Town Hall Plaza and Market





Mountain Lodge Location



[Click here to see lodging location:](#)
[Click here to see suites and amenities.](#)



ACCOMMODATIONS

Ski-In/Ski-Out Accommodations

Complimentary Wi-Fi

Grocery Shopping Service

Ski Rental Service - Christy Sports

Heated Pool & Hot Tubs

Fitness Center & Steam Room

The View Bar & Grill

Meeting & Event Facilities

Ski Lockers & Storage (\$25 Key Deposit Refunded at checkout)

Shuttle Bus Service

Concierge Services

In-Room Spa Services

Pet Friendly Hotel

Free Shuttle to Gondola, Mountain Village Market, and Mountain Village Core

Hot Tub Bar Service

Concierge Neddie Troutman at 970-369-6116..



[Live Web Cam from Mountain Lodge](#)



FREE GONDOLA

Ride time	13 minutes from Oak Street Plaza to Mountain Village Center
Highest point	10,540 feet at Station St. Sophia
Total length	3 miles
Longest section	5,750 feet long with vertical rise of 1,790 feet
Average speed	11 mph
Capacity	8 people per gondola cabin. 900 people per hour, the equivalent of eighteen 50-passenger busses
Passengers per year	Approximately 2.5 million passengers annually
Environmental impact	All the electricity used to operate the Gondola comes from wind and solar power
One-of-a-kind	The gondola is the first and only free transportation system of its kind in the United States.



TELLURIDE



Colorado's premier heli-ski operation, servicing 250 square miles of terrain.



The Telluride Ski Resort is located in the Uncompahgre National Forest and operates under special-use permit from the U.S. Forest Service.



SKI & RIDE ALREADY!

When do the lifts spin? Lifts start spinning at 9am daily.
Chair Lifts are named and numbered.



Let me know if you want a 6th day lift ticket! \$75 when reserved ahead.

Mountain tours : Departs daily at 10am from the top of the Coonskin Lift (Lift 7).
Tour lasts for approx. 2.5 hours. At minimum, intermediate ski ability is required.

Gorrano Ranch closes before the lifts stop. They will not let you stay after they close.
If the lifts are closed, ski to the bottom and take the gondola back to the lodge.

Discounted lessons? You will receive a coupon in your ticket package upon arrival.

Mountain Adventure, 11am–3:45pm, \$110

Morning Max 4 people, 9am –11am, \$75

NASTAR - opens at 10 am everyday on Misty Maiden ski run off Chair 5. Individuals can go at any time and pay full price. Possible private group NASTAR races at \$15 per person. 2Hr for group plus optional BBQ at Gorrano Ranch. Sign up now....

Discounted Rentals at the Lodge. contact Troy Phillips tphillips@christysports.com
(970)-369-4727) at Christy Sports



Health Issues

Where is closest medical clinic?

Downtown 500 W Pacific Ave, Telluride, CO 81435

Prepare for altitude? **Drink Water!** :

<http://www.altitudemedicine.org/optimizing-health-at-altitude/>



-
- Staying hydrated is important as it aids your body in acclimatizing.
- Avoid use of alcohol or sleeping agents of the benzodiazepine family, since they both suppress breathing and result in lower blood oxygen. Other sleeping pills like Ambien or Lunesta do not affect breathing at high altitude and are safe.
- Avoid over-exertion for 1-2 days after arrival to altitude.
- Acetazolamide (Diamox®) taken 24 hours prior to arrival to altitude and the first 2 days at altitude is 75% effective in preventing AMS. It speeds up the acclimatization process in the body, stimulates breathing, raises blood oxygen and increases urination. Watch for sulfa allergies?
- Ginkgo biloba, according to some studies was effective in preventing AMS when started 5 days prior to ascending to altitude, at a dose of 100 mg twice a day.
- Avoiding exposure to viral illness such as coughs and colds will improve your chances of staying healthy. When traveling consider wearing a mask if exposed to someone with a severe cough.



ENJOYING OTHER ACTIVITIES!

Après Ski anyone? There are many activities to enjoy in Telluride – here's a glimpse.

- Historical Museum
- Walking Tour
- The Peaks Spa
- Nordic
- Snowmobiling
- Hiking
- Fat Biking
- Snow-Shoeing, Ice Climbing, Cat Skiing, Heli-Skiing, Wagner Custom Factory tour
- Sure-Fit
- Backcountry Skiing.

Check them out at

<http://www.tellurideskiresort.com/events-activities/activities/winter/>





ENJOYING OTHER ACTIVITIES!

LOCATED ON THE MOUNTAIN VILLAGE GONDOLA PLAZA
WINTER SEASON HOURS: 8AM-5PM | 7 DAYS A WEEK
FOR MORE INFORMATION CALL (970) 728-7433 OR
EMAIL ADVENTURE@TELSKI.COM

- [Restaurants](#)
- [Shopping](#)
- [Art Galleries](#)
- [Spa & Beauty](#)



SNOWSHOEING



SNOWMOBILING



ICE CLIMBING



CAT SKIING



HELI-SKIING



BACKCOUNTRY SKIING



AND OF COURSE..... FOOD!

VISITORS' GUIDE

Consider...

Brown Dog

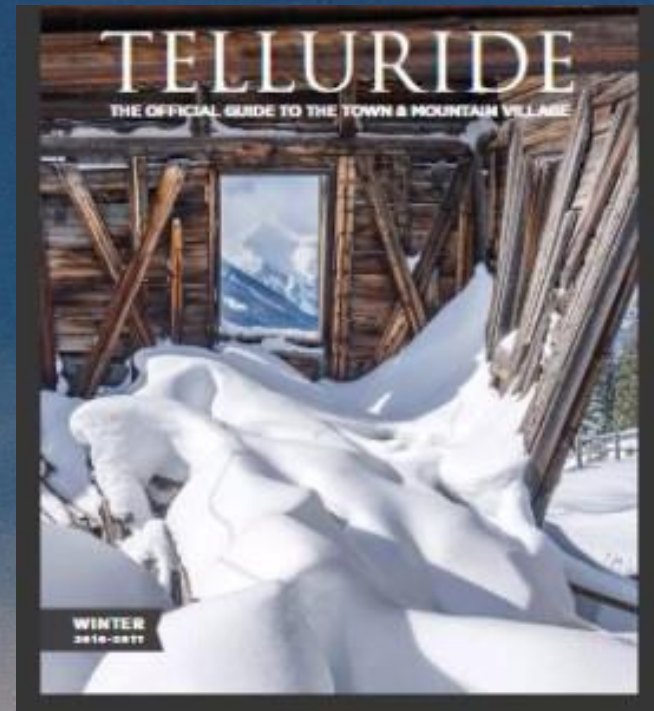
Bon Vivant (On mountain & Dinner Cat Ride)

Vino Alpino (On mountain & Dinner Cat Ride)

The New Sheridan

Oak (BBQ)

Non-skiers can meet up with their skiing/riding friends at the Tomboy Tavern and Crazy Elk Pizza in Mountain Village, The View at the Lodge, and Altera top of Main Gondola





QUESTIONS?

TO DO:

Send passport copies / verify your information is correct on the manifest

Order a 6th Day Lift Ticket

Let me know interest for NASTAR

PROVIDE CELL PHONE # for group list.

Plan for car pool or park/fly to airport

Park in the back row, take the stairs and Ginko.
Drink water!

Investigate shipping gear and let me know if you plan to do this so I can give names to the bell staff.

Squats.

Reserve dinner at Vino Alpino & Bon Vivant



CONTACT

JANE MILLER

janemmms@gmail.com

president@Lebanonskiclub.com

717-507-0186